

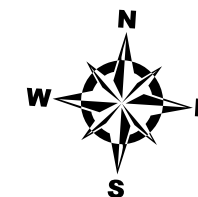
LEGEND

- State Trunkline
- County Primary
- County Local
- Railroad
- City or Village Street
- Adjacent County
- Township Line
- City or Village Boundary
- Lake/River

PRIMARY ROAD SYSTEM IS 30.45 MILES
LOCAL ROAD SYSTEM IS 48.12 MILES

I HEREBY CERTIFY THAT THE ROADS SHOWN
HEREON BY SYMBOLS AS LOCAL ROADS ARE IN
USE AND ARE UNDER THE JURISDICTION OF THE
COUNTY ROAD COMMISSION.

NORTHFIELD
TWP.



0 0.5 1 Miles

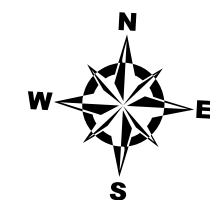


LEGEND

- State Trunkline
- County Primary
- County Local
- Railroad
- City or Village Street
- Section Line
- City or Village Boundary
- Lake/River

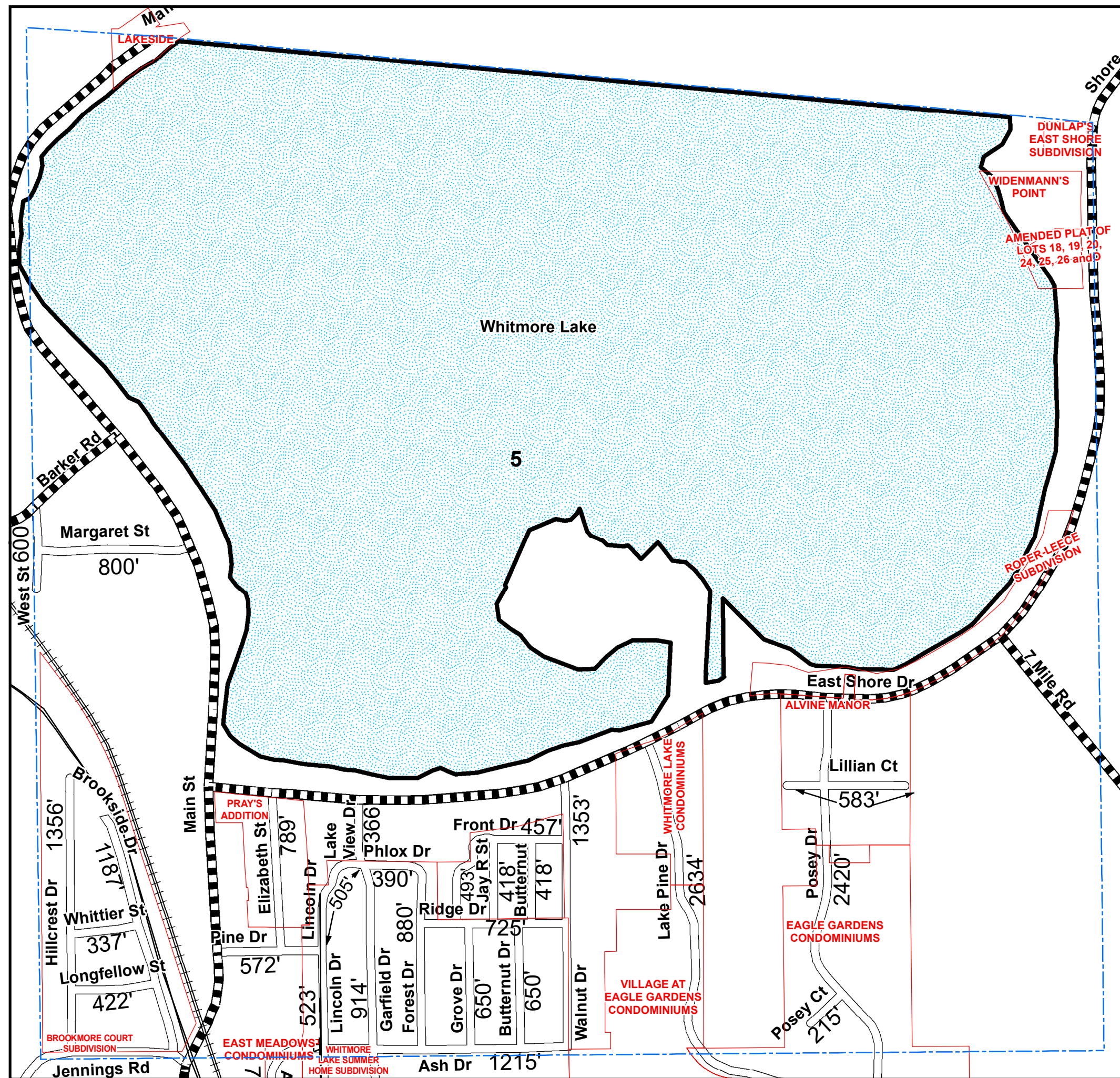
Total Feet 21,872 Equals 4.14 Miles

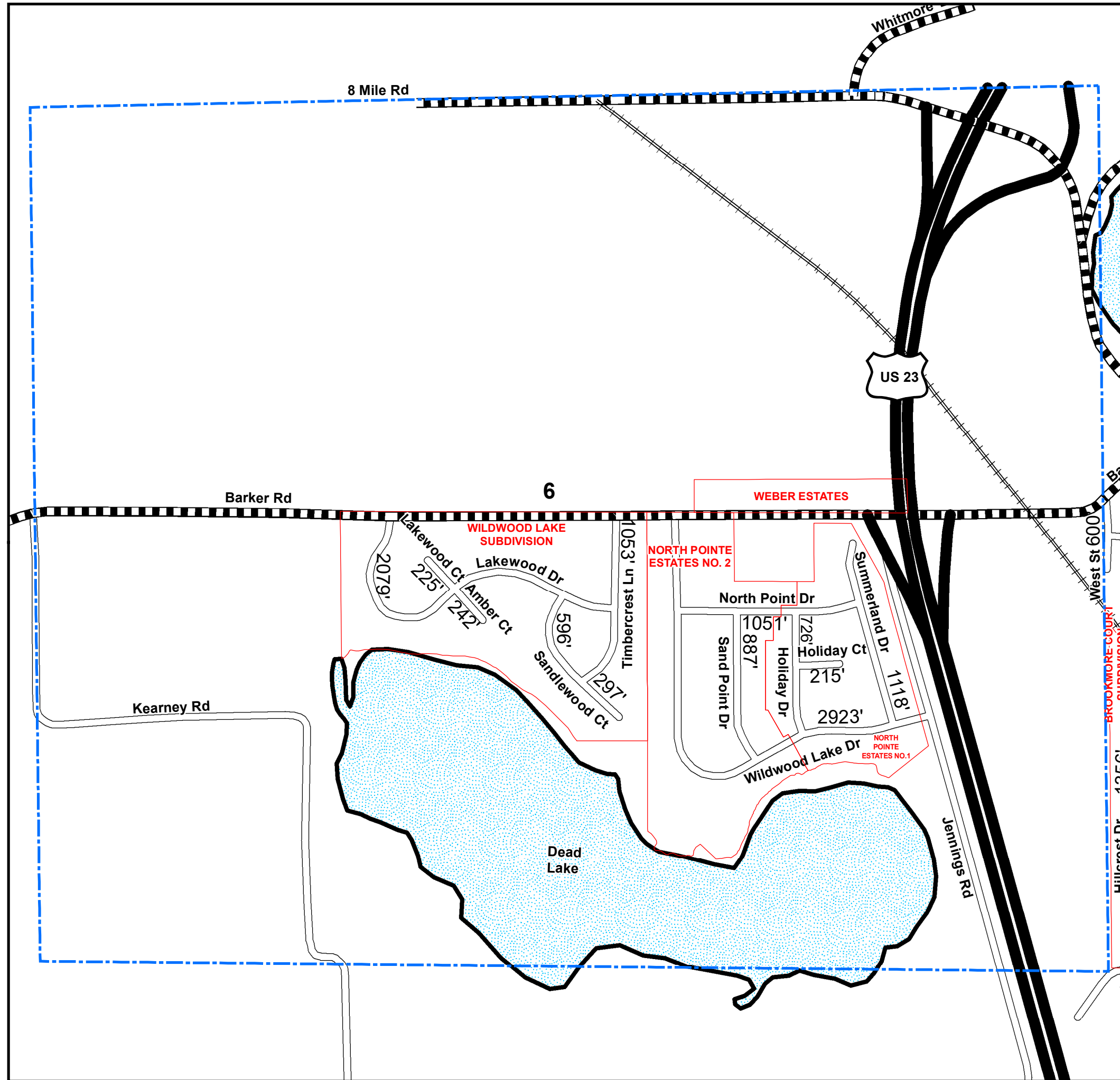
I HEREBY CERTIFY THAT THE ROADS SHOWN HEREON BY SYMBOL AS LOCAL ROADS ARE IN USE AND ARE UNDER THE JURISDICTION OF THE COUNTY ROAD COMMISSION.



0 500 1,000 Feet

Township NORTHFIELD
Section 5 T 1S R 6E
County WASHTENAW



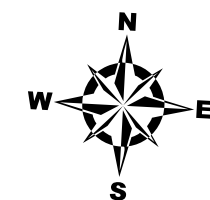


LEGEND

- State Trunkline
- County Primary
- County Local
- Railroad
- City or Village Street
- Section Line
- City or Village Boundary
- Lake/River

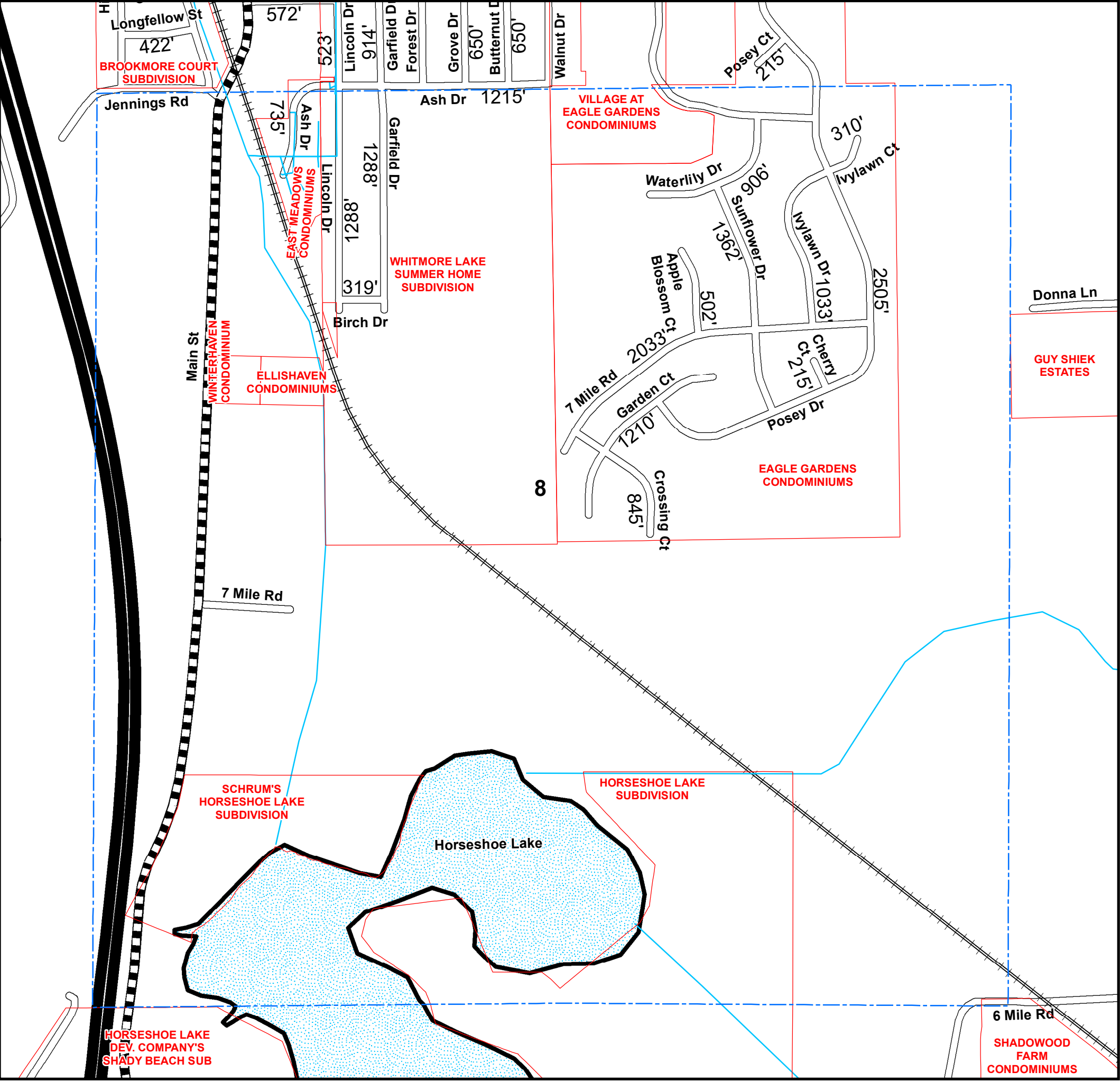
Total Feet 11,412 Equals 2.16 Miles

I HEREBY CERTIFY THAT THE ROADS SHOWN
HEREON BY SYMBOL AS LOCAL ROADS ARE IN
USE AND ARE UNDER THE JURISDICTION OF THE
COUNTY ROAD COMMISSION.



0 500 1,000 Feet

Township NORTHFIELD
Section 6 T 1S R 6E
County WASHTENAW



LEGEND

State Trunkline

County Primary

County Local

Railroad

City or Village Street

Section Line

City or Village Boundary

Lake/River

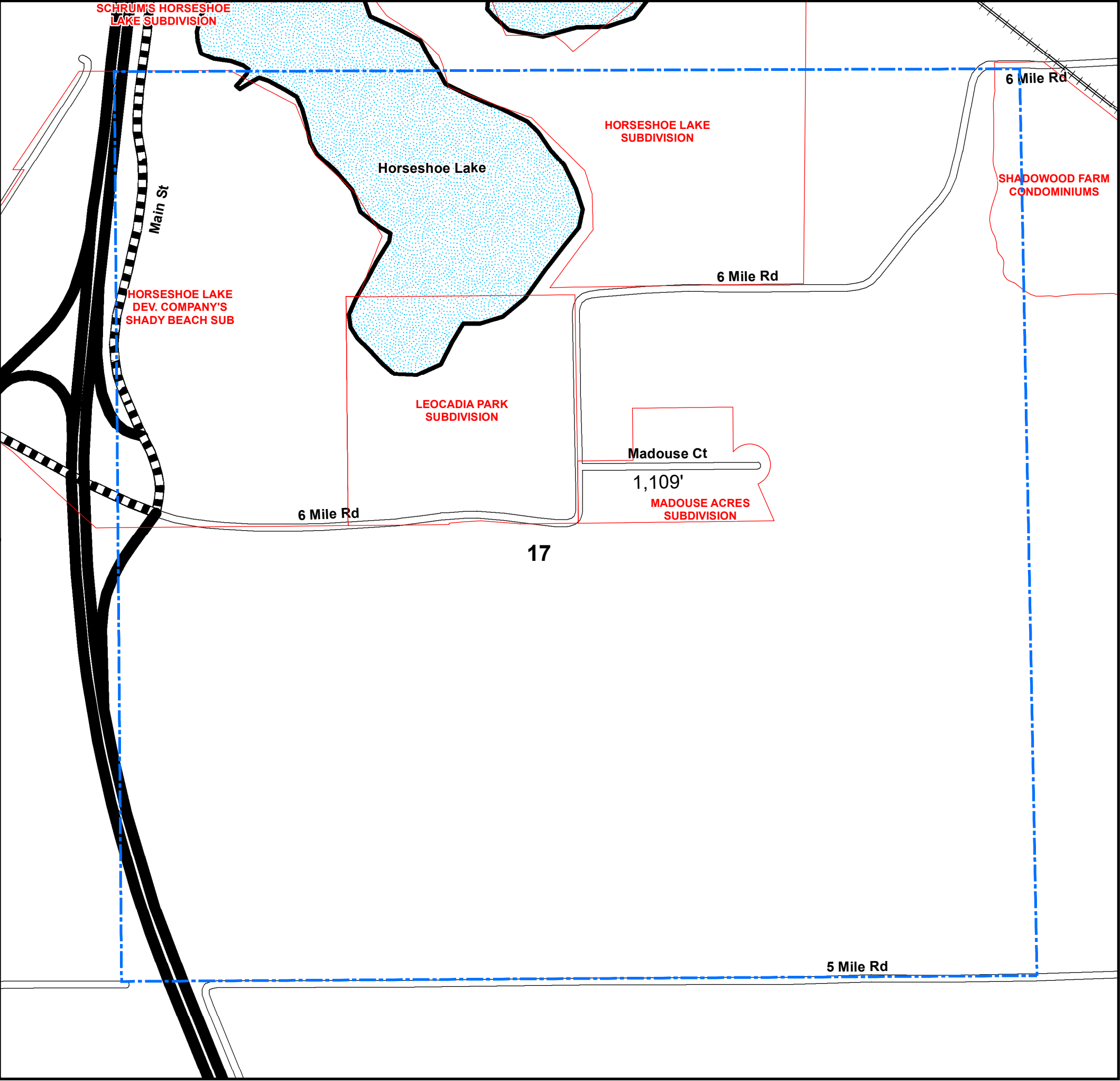
Total Feet 14,551 Equals 2.76 Miles

I HEREBY CERTIFY THAT THE ROADS SHOWN
HEREON BY SYMBOL AS LOCAL ROADS ARE IN
USE AND ARE UNDER THE JURISDICTION OF THE
COUNTY ROAD COMMISSION.



0 500 1,000 Feet

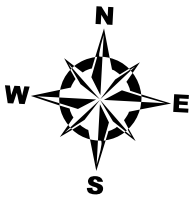
Township NORTHFIELD
Section 8 T 1S R 6E
County WASHTENAW



LEGEND	
State Trunkline	
County Primary	
County Local	
Railroad	
City or Village Street	
Section Line	
City or Village Boundary	
Lake/River	

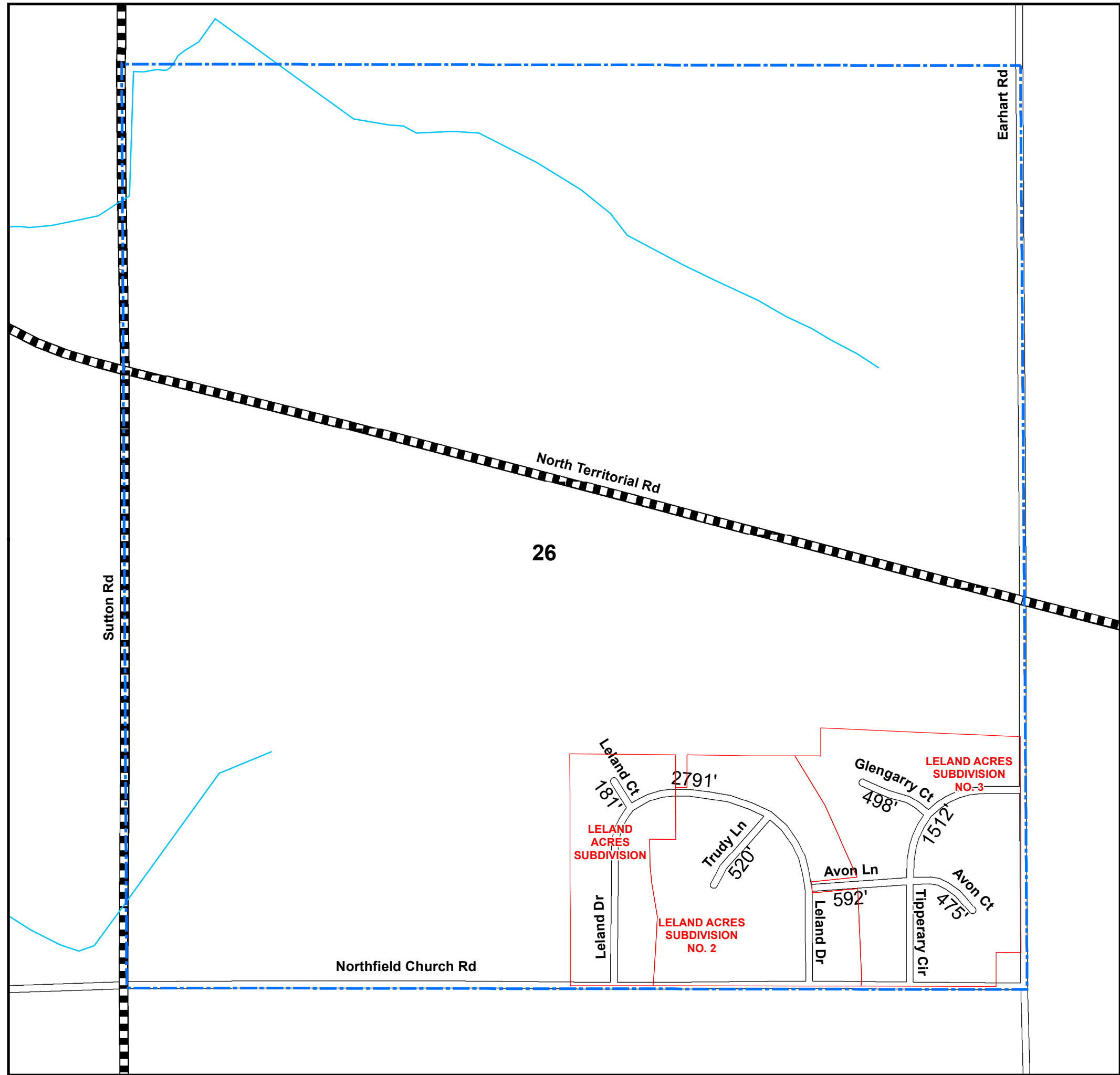
Total Feet 1,109 Equals 0.21 Miles

I HEREBY CERTIFY THAT THE ROADS SHOWN
HEREON BY SYMBOL AS LOCAL ROADS ARE IN
USE AND ARE UNDER THE JURISDICTION OF THE
COUNTY ROAD COMMISSION.



0 500 1,000
 Feet

Township NORTHFIELD
Section 17 T 1S R 6E
County WASHTENAW

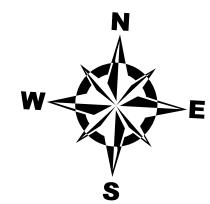


LEGEND

- State Trunkline
- County Primary
- County Local
- Railroad
- City or Village Street
- Section Line
- City or Village Boundary
- Lake/River







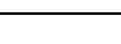

Total Feet 6,569 Equals 1.24 Miles

I HEREBY CERTIFY THAT THE ROADS SHOWN
HEREON BY SYMBOL AS LOCAL ROADS ARE IN
USE AND ARE UNDER THE JURISDICTION OF THE
COUNTY ROAD COMMISSION.



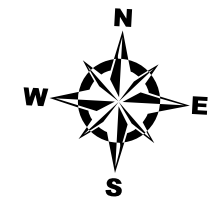
0 500 1,000 Feet

Township NORTHFIELD
Section 26 T 1S R 6E
County WASHTENAW

LEGEND	
State Trunkline	
County Primary	
County Local	
Railroad	
City or Village Street	
Section Line	
City or Village Boundary	
Lake/River	

Total Feet 423 Equals 0.08 Miles

I HEREBY CERTIFY THAT THE ROADS SHOWN
HEREON BY SYMBOL AS LOCAL ROADS ARE IN
USE AND ARE UNDER THE JURISDICTION OF THE
COUNTY ROAD COMMISSION.

[illegible]

Township NORTHFIELD

Section 36 T 1S R 6E

County WASHTENAW